



A simple, versatile tension banner system for the perfect display installation.

Spirit-FLEX™ Tension System is one of the most popular choices for the professional, durable installation of banners, flex-face and other printed flex media including mesh and canvas.

Spirit-TEX™ Fabric Tensioning System from Spirit Displays is a unique range of aluminium display profiles which solves common challenges in sizing and tensioning fabric displays.

Truck-SKINZ™ system offers a quick-change banner system for effective, durable vehicle branding for rigid-side trucks and refrigerated vehicles.



Spirit-FLEX™ is a cost-effective, easy-to-use and versatile product, the Spirit-FLEX™ tension banner frames can be manufactured to any size and shape, always giving you an exceptional finish.

Spirit-FLEX™ is a 2-part clip system for tensioning and fixing PVC banner vinyl and mesh. The base aluminium frame is mitre cut and fixed to the base structure. The banner is then stretched over the frame and the tension strip 'clip' profile is hammered into the base channel clipping the banner in place and simultaneously creating the tension.

Banners require no finishing and are just printed with 100mm (4") bleed which is trimmed off after installation.

Product specifications:

Supplied in 3060mm lengths
Popular profiles stocked in black and white
Wide range of base profiles

Product variations:

Curved and shaped
Single and multi-channel tensioning
Optional anodised cover plate

FLEX-C PROFILE

- A basic channel profile for smaller displays up to 10sqm
- Uses smaller concealed countersunk fixings or rivets
- Ideal for fitting textiles and canvas to internal walls
- Suitable for retrofit to existing lightboxes

Material:

Aluminium 6063 T6

Dimensions:

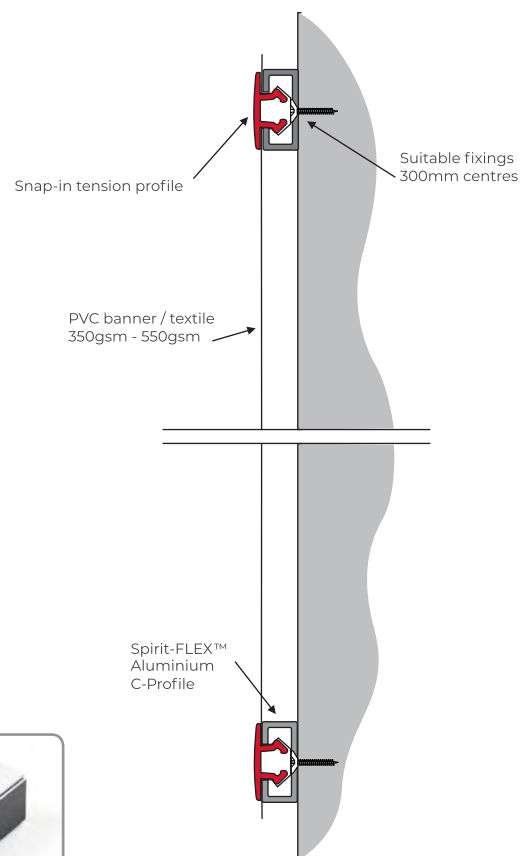
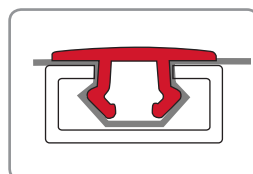
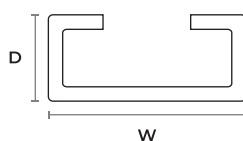
Width: 22mm
Depth: 11mm
Length: 3060mm

Finish:

Mill

Compatible parts:

Snap-in tension profile



FLEX-F PROFILE

- A versatile profile for use on a wide variety of surfaces
- The extra 18mm flange allows space for larger fixings
- Ideal for fixing and tensioning banners and textiles
- Suitable for installing banners of more than 300sqm

Material:

Aluminium 6063 T6

Dimensions:

Width: 40mm

Depth: 11mm

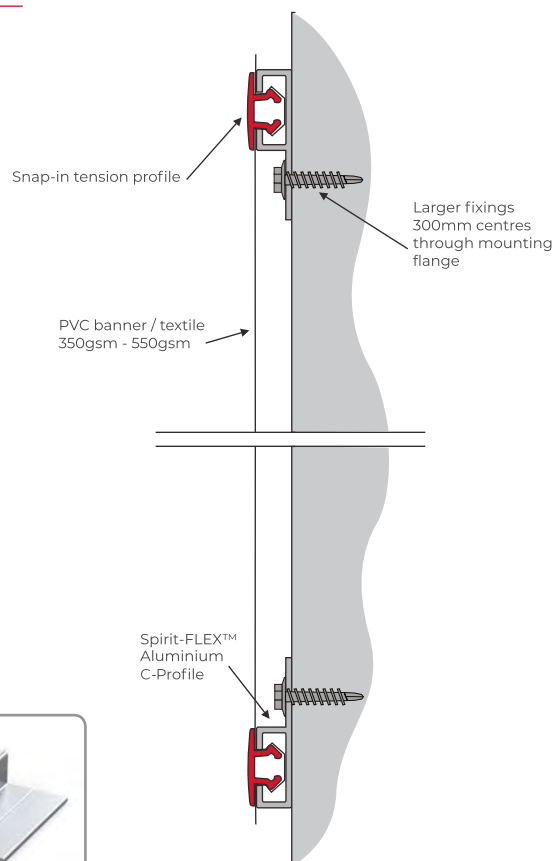
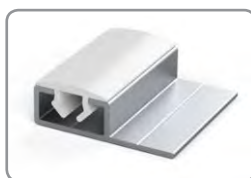
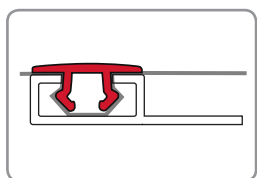
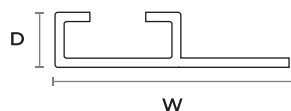
Length: 3060mm

Finish:

Mill

Compatible parts:

Snap-in tension profile



TENSION STRIPS

- Advanced and regular material for different weather conditions
- Used for fixing and tensioning the banner into the channel
- Finishes the tensioned graphics with a neat 22mm trim edge
- Suitable for installing banners of more than 300sqm

Colour:

Black (indoor only) and White

Dimensions:

Width: 22mm

Depth: 9,5mm

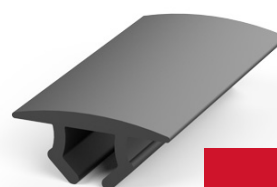
Use:

Advanced tension strip - ideal for outdoor use

Regular tension strip - ideal for indoor use

Compatible parts:

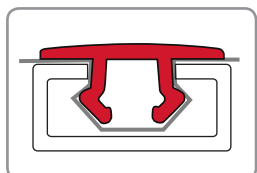
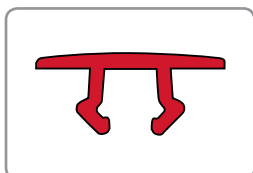
All Spirit-Flex profiles



Black



White





Spirit-TEX™ Fabric System is a fabric display system is an improvement on existing frames. Spirit Displays recognises the benefit of silicone edge graphics and the system caters for those who want to use it purely with silicone to all edges. It offers compatibility with dye-sub, UV and latex printed fabrics, a greater tolerance for large sizes and a simpler finish without the need for stitching. The use of silicone to the top edge with the introduction of the add-on gripper profile means that tensioning these fabrics is done easily and Spirit-TEX™ displays are always perfectly tensioned.

Product specifications:

- Compatible with 14mm silicone and Spirit-TEX™ gripper
- Profiles held in 3060mm and 6130mm lengths
- Small wall frames to large structural builds

Product variations:

Single and double-sided
Non-illuminated and lightbox profiles

TEX-18 PROFILE

- A versatile profile for use on a wide variety of wall surfaces
- Lightweight and cost-effective
- Ideal for fixing and tensioning most lightweight textiles
- Suitable for installing large non-illuminated fabrics

Material:

Aluminium 6063 T6

Dimensions:

Width: 18mm
Depth: 28mm
Length: 3060mm

Finish

Anodised

Compatible parts:

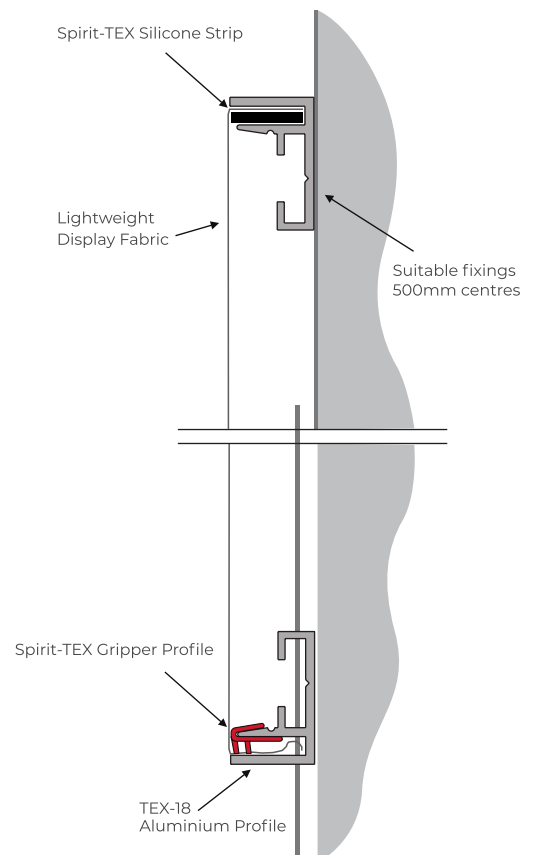
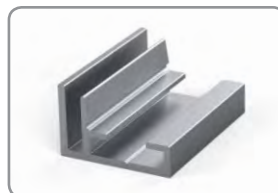
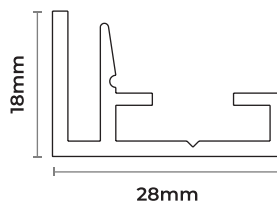
Spirit-TEX Gripper
Silicone strip
Connector plates

Connecting options:

Flat Corner Connector



Straight Connector



GRIPPER

The **Spirit-TEX™ Gripper** is the key to this innovative solution. It eliminates the need for silicone edge finishing, so no additional finishing equipment and staffing required, while still providing a flawless result.

- Suitable for all Spirit-TEX profiles
- Especially effective on large and odd shaped frames
- Can be combined with silicone edge in a single frame

Material:
Plastic

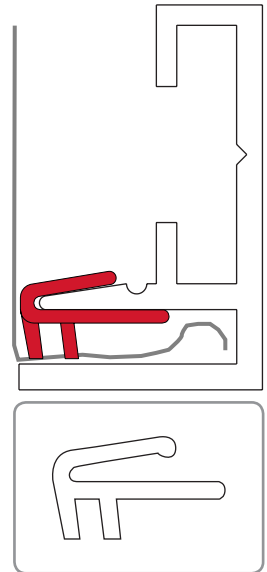
Dimensions:
Width: 11mm | Depth: 6mm | Length: 3060mm

Finish:
White plastic (not visible in the finished frame)

Compatible parts:
All Spirit-TEX profiles



Spirit-TEX 18



BRACKETS

Material:
Mild Steel

Finish:
Bright Zinc Plate



Flat Corner Connector



Straight Connector

TEX-TAPE

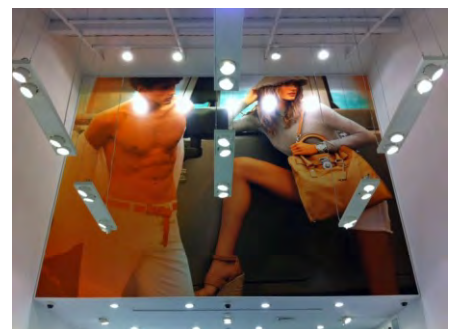
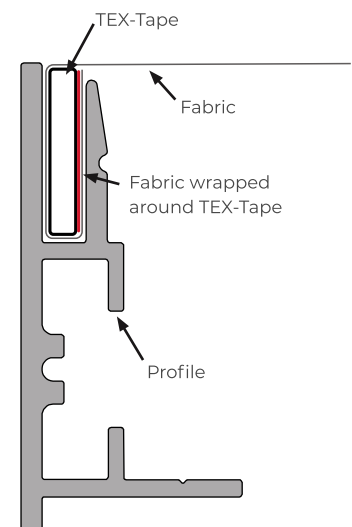
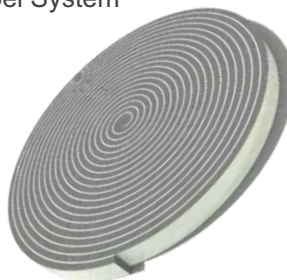
- A flexible PVC carrier coated with a high performance adhesive tape
- A premium self-adhesive tape for use with tension fabric systems
- Can be used with dye-sub or UV printed fabrics
- No stitching required
- Use as top reference edge with Spirit-TEX Gripper System

Material:
Adhesive PVC

Dimensions:
Width: 14mm | Depth: 3mm | Length: 25mm

Finish:
Transparent

Compatible parts:
Spirit-TEX system





Truck-SKINZ™

The **Truck-SKINZ™** system offers a quick change banner system for effective, durable vehicle branding for rigid-side trucks and refrigerated vehicles. Skins are finished with our high quality keder to all edges to ensure absolute security for this high demand environment.

Truck-SKINZ™ frames are supplied as profile lengths or manufactured to size and ready to fit. Base frames are bonded or riveted to the vehicles and banners installed with a second, hinge tension profile. Banners are finished with a 4mm round keder edging which provides for easy change and ultimate security of fix.

- A specially developed system for fitting banners to trucks and large outdoor changeable frames
- Easily change banners in under 15 minutes
- Robust keder track system for durability and safety
- Multiple grooves with up to 60mm adjustment for a perfect fit

Material:

High quality aluminium 6063 T6

Dimensions:

Width: 80mm | Depth: 14mm | Length: 3050mm

Finish:

Silver anodised

Compatible parts:

4mm keder
Spring clips
Corner Covers



Accessories:

Corner Cover

4mm Keder

